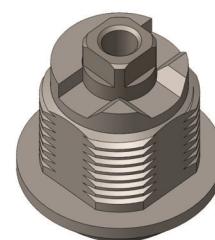
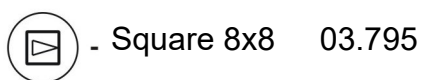


Type A



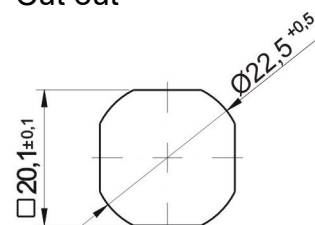
Type B

Shape of key



- Square 8x8 03.795

Cut out

 $H^* = 18$

* it is possible to agree another dimension

Materiál : Body - alloy ZnAl , RAL 7035, 7012, 9005, Cr
 Cam - thickness 3 - 4 mm, steel, zinc plated
 Insert - alloy ZnAl

Order example of lock - H = 18, key square 8x8, RAL 9005, cam TI. 4, right

Lock Z3SP 03.795 - 18 - 4 - 9005 - P