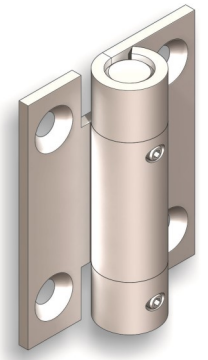
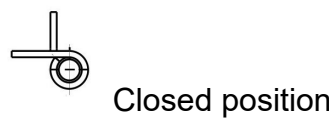
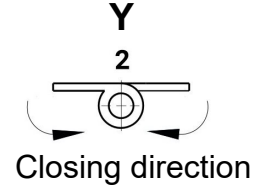
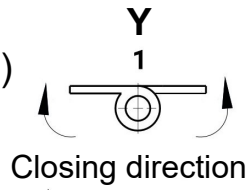


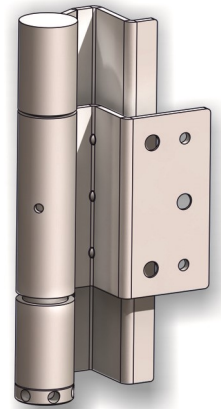
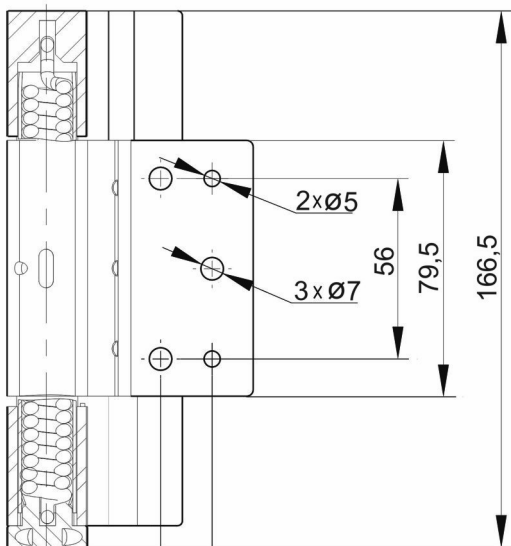
RT89
(spring)



Material: steel, zinc plated

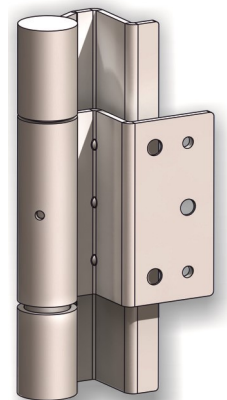
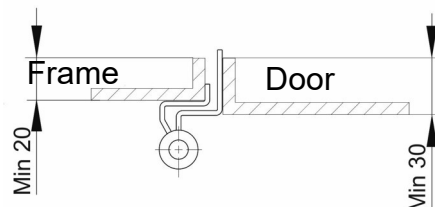
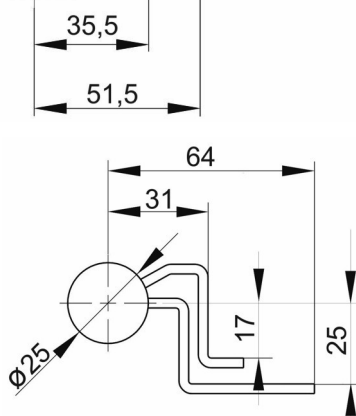
| Cat.No. | A | L | L1 | B | B1 |
|---------|---|----|----|----|----|
| 03.1111 | 3 | 70 | 48 | 55 | 38 |
| 03.1112 | 3 | 80 | 60 | 65 | 45 |
| 03.1113 | 3 | 60 | 36 | 76 | 56 |

RT90A Cat.No. 03.1114



Spring hinge RT90A

RT90B Cat.No. 03.1115



Hinge bearing RT90B
(without spring)