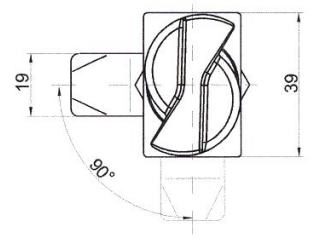
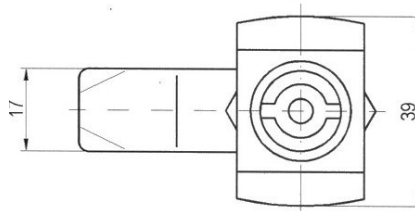
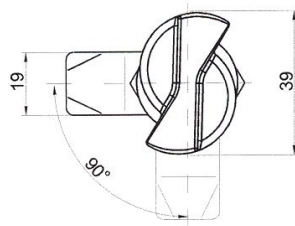
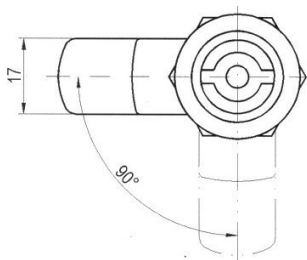
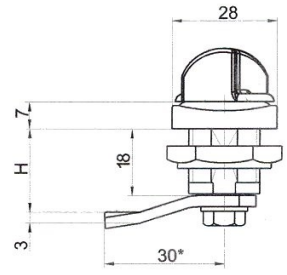
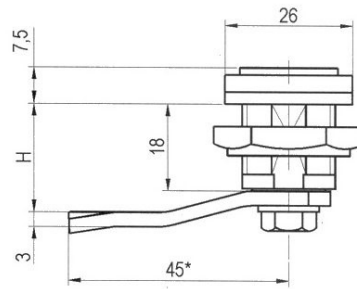
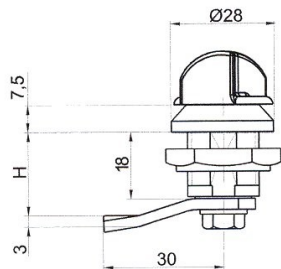
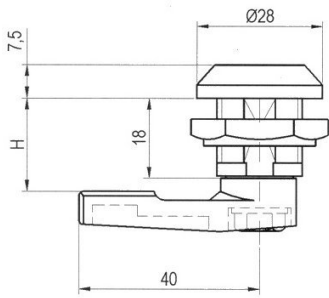


Z11

Z11/M
03.517

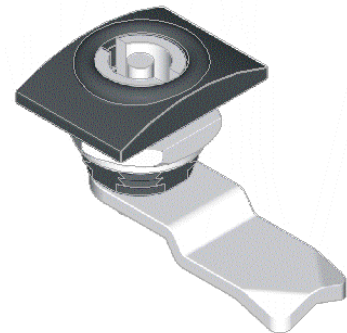
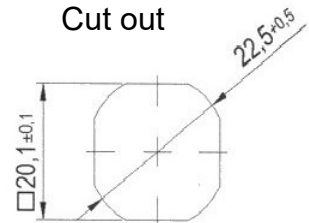
Z12

Z12/M
03.516



	Z11	Z12
Triangle 9 mm	03.216	03.225
Square 8 mm	03.217	03.226
Groove	03.218	03.227
Doppelbart 3	03.221	03.230
Doppelbart 5	03.219	03.228
Type N	03.220	03.229
square 6	03.222	03.231

Cut out



Material :

Body : Polyamid PA6, colour RAL-7035/gray, 9005/black

Insert : alloy ZnAl, brass, polyamid PA6

Cam : steel (zinc plated), polyamid PA6

H = 18, 21, 24, 29

Identification of material :

Steel Fe
Brass Ms
Polyamid PA6
Alloy ZnAl ZnAl

**Order example of type 03.216(insert polyamid), H=18(cam steel), RAL7035
Lock Z11 /03.216-PA6/18-Fe/7035**