

Ceiling / wall lamps

IP40	230V			
------	------	--	--	--

SHADE - GLASS
METAL BASE - WHITE PAINTED

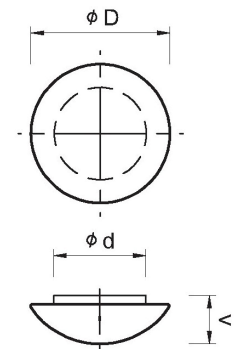
LIGHT SOURCE

POWER LED MODULES

8W - 12W - 16W

power LED modules [W]	design of LED modules	light color [K]	luminous flux [lm]
8	PURE WHITE	5600	800
8	WARM WHITE	3000	650
12	PURE WHITE	5600	1210
12	WARM WHITE	3000	1000
16	PURE WHITE	5600	1590
16	WARM WHITE	3000	1300

code	eulum data	φD(mm)	φd(mm)	v(mm)	number of LED modules	W	shade
15262		200	160	100	1	8	opal
15263		200	160	100	1	8	opal-matt
15272	●	260	204	110	1	12	opal
15273	●	260	204	110	1	12	opal-matt
15312	●	305	204	110	1	12	opal
15313	●	305	204	110	1	12	opal-matt
15283	●	310	244	120	1	16	opal-matt



Ceiling / wall lamps

IP40	230V			
------	------	--	--	--

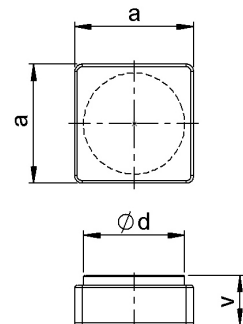
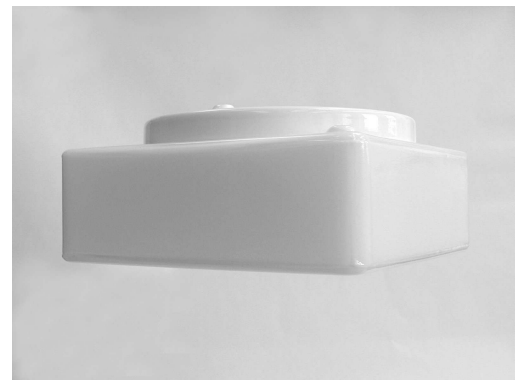
SHADE - GLASS
METAL BASE – WHITE PAINTED

LIGHT SOURCE

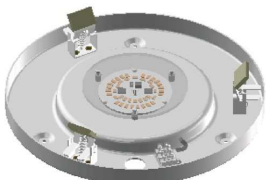
POWER LED MODULES 12W

power LED modules [W]	design of LED modules	light color [K]	luminous flux [lm]
12	PURE WHITE	5600	1210
12	WARM WHITE	3000	1000

code	eulum data	axa(mm)	φd(mm)	v(mm)	number of LED modules	W	shade
15317		240x240	204	100	1	12	opal



metal base 16W



metal base 12W



metal base 8W

